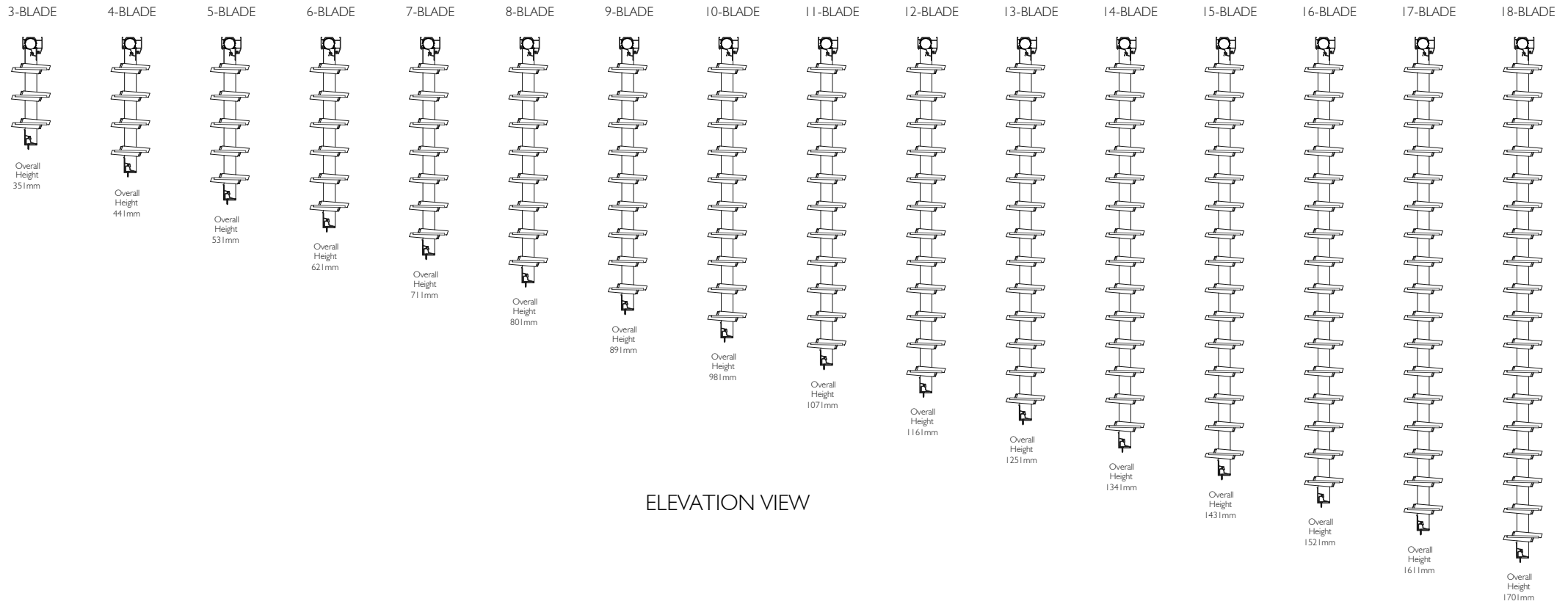


ALTAIR MK1 102 POWERLOUVRE IN COMPONENT FORM

Standard Heights



ELEVATION VIEW

Proprietary and confidential

Rev	Description	Approved By	Date
A	Added further information about clip version	A.E	17.3.16
B	Update component form power head and head weatherstrip insert profiles	D.F	30.1.19

Title:

Altair MK1 102 Powerlouvre
in Component Form
Standard Heights

Drawn by: D.Oe Date: 03/08/2010 Scale: 1:1

breezway

35 Cambridge Street, Coorparoo QLD 4151, ABN 24 081 897 823

Sheet 1 of 5

Revision B

Material:

Finish:

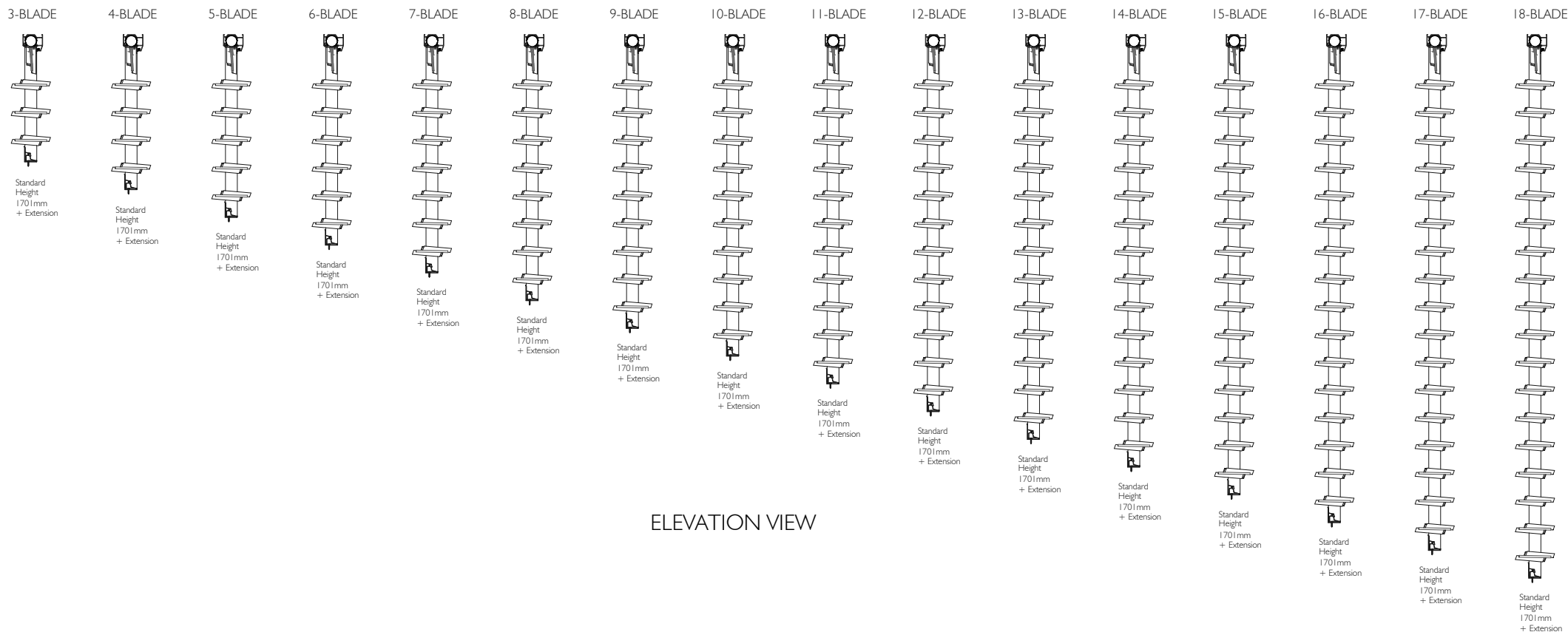
SAP Mat No:

Dwg No:

The information contained in this drawing is the sole property of Breezway Australia. Any reproduction in part or as a whole, without the written permission of Breezway Australia is prohibited.

ALTAIR MKI 102 POWERLOUVRE IN COMPONENT FORM

Off-Standard Heights



ELEVATION VIEW

Proprietary and confidential

Rev	Description	Approved By	Date
A	Added further information about clip version	A.E	17.3.16
B	Update component form power head and head weatherstrip insert profiles	D.F	30.1.19

Title:

Altair MKI 102 Powerlouvre
in Component Form
Off-Standard Heights

Drawn by: D.Oe Date: 03/08/2010 Scale: 1:1

breezway

35 Cambridge Street, Coorparoo QLD 4151, ABN 24 081 897 823

Sheet 2 of 5

Revision B

Material:

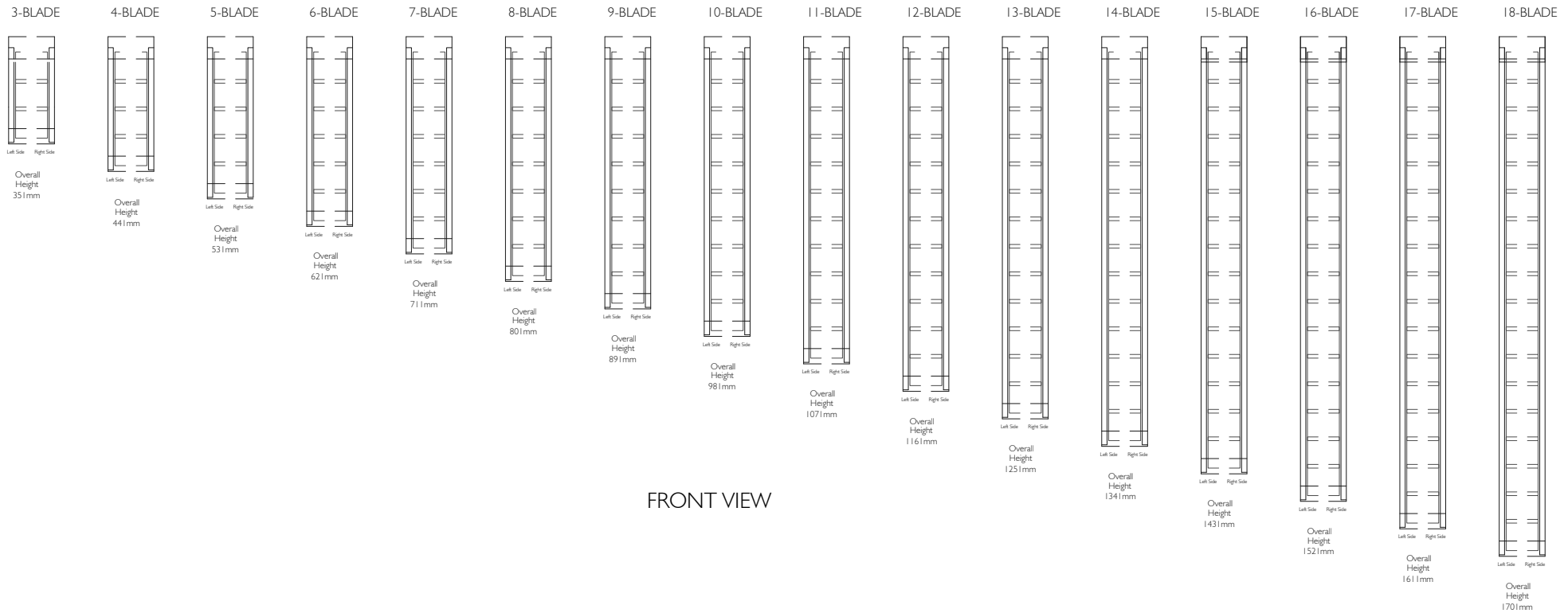
Finish:

SAP Mat No:

Dwg No:

The information contained in this drawing is the sole property of Breezway Australia. Any reproduction in part or as a whole, without the written permission of Breezway Australia is prohibited.

ALTAIR MKI 102 POWERLOUVRE IN COMPONENT FORM



FRONT VIEW

Proprietary and confidential

Rev	Description	Approved By	Date
A	Added further information about clip version	A.E	17.3.16
B	Update component form power head and head weatherstrip insert profiles	D.F	30.1.19

Title:

Altair MKI 102 Powerlouvre
in Component Form

Drawn by: D.Oe Date: 03/08/2010 Scale: 1:1

breezway

35 Cambridge Street, Coorparoo QLD 4151, ABN 24 081 897 823

Sheet 3 of 5

Revision B

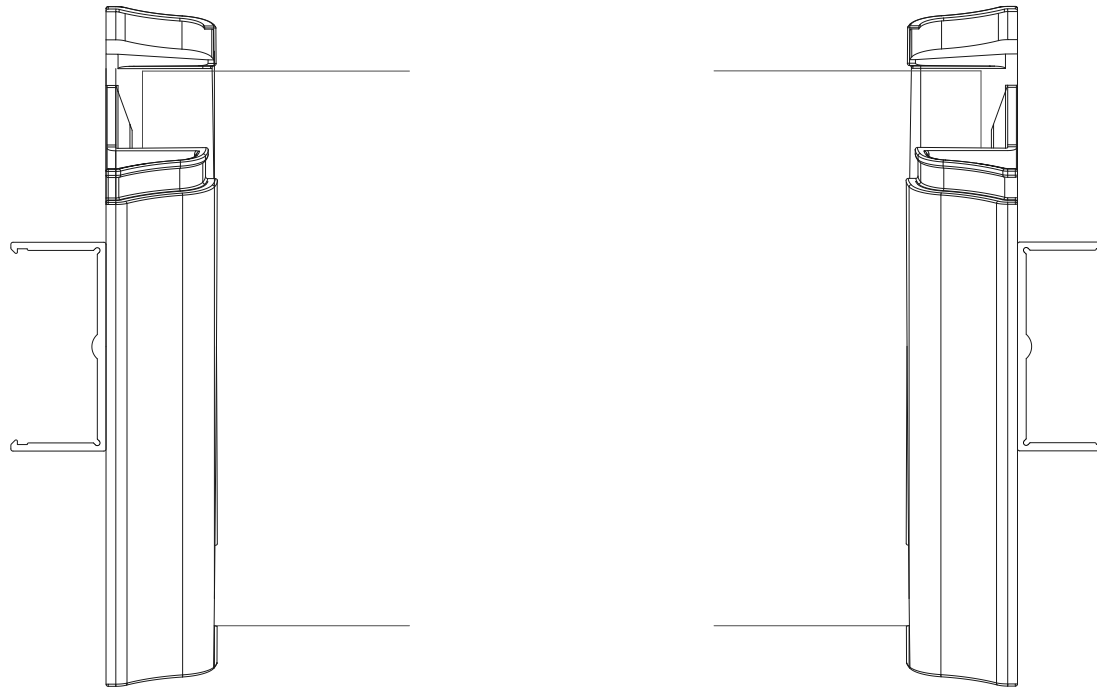
Material:

Finish:

SAP Mat No:

Dwg No:

ALTAIR MKI 102 LOUVRE COMPONENT FORM



PLAN VIEW

Proprietary and confidential

Rev	Description	Approved	
		By	Date
A	Added further information about clip version	A.E	17.3.16
B	Update component form power head and head weatherstrip insert profiles	D.F	30.1.19

Title:

Altair MKI 102 Powerlouvre
in Component Form

breezway

35 Cambridge Street, Coorparoo QLD 4151, ABN 24 081 897 823

Material:

Finish:

SAP Mat No:

Dwg No:

Drawn by: D.Oe Date: 03/08/2010 Scale: 1:1


Sheet 4 of 5

Revision B

The information contained in this drawing is the sole property of Breezway Australia. Any reproduction in part or as a whole, without the written permission of Breezway Australia is prohibited.

Specification

The louvre window shall be Altair MKI 102mm Powerlouvre in component form installed with an (insert outer frame spec here) – as certified by the Australian Window Association. Fabricated to perform in (Insert applicable N or C rating) Zone to comply with AS 2047.

Proprietary and confidential The information contained in this drawing is the sole property of Breezway Australia. Any reproduction in part or as a whole, without the written permission of Breezway Australia is prohibited.	Rev	Description	Approved		Title: Altair MKI 102 Powerlouvre in Component Form Drawn by: D.Oe Date: 03/08/2010 Scale: 1:1	 35 Cambridge Street, Coopers QLD 4151, ABN 24 081 897 823	Material:	
	A	Added further information about clip version	A.E	17.3.16			Finish:	
	B	Update component form power head and head weatherstrip insert profiles	D.F	30.1.19			SAP Mat No:	
							Dwg No:	
					Sheet 5 of 5	Revision B		